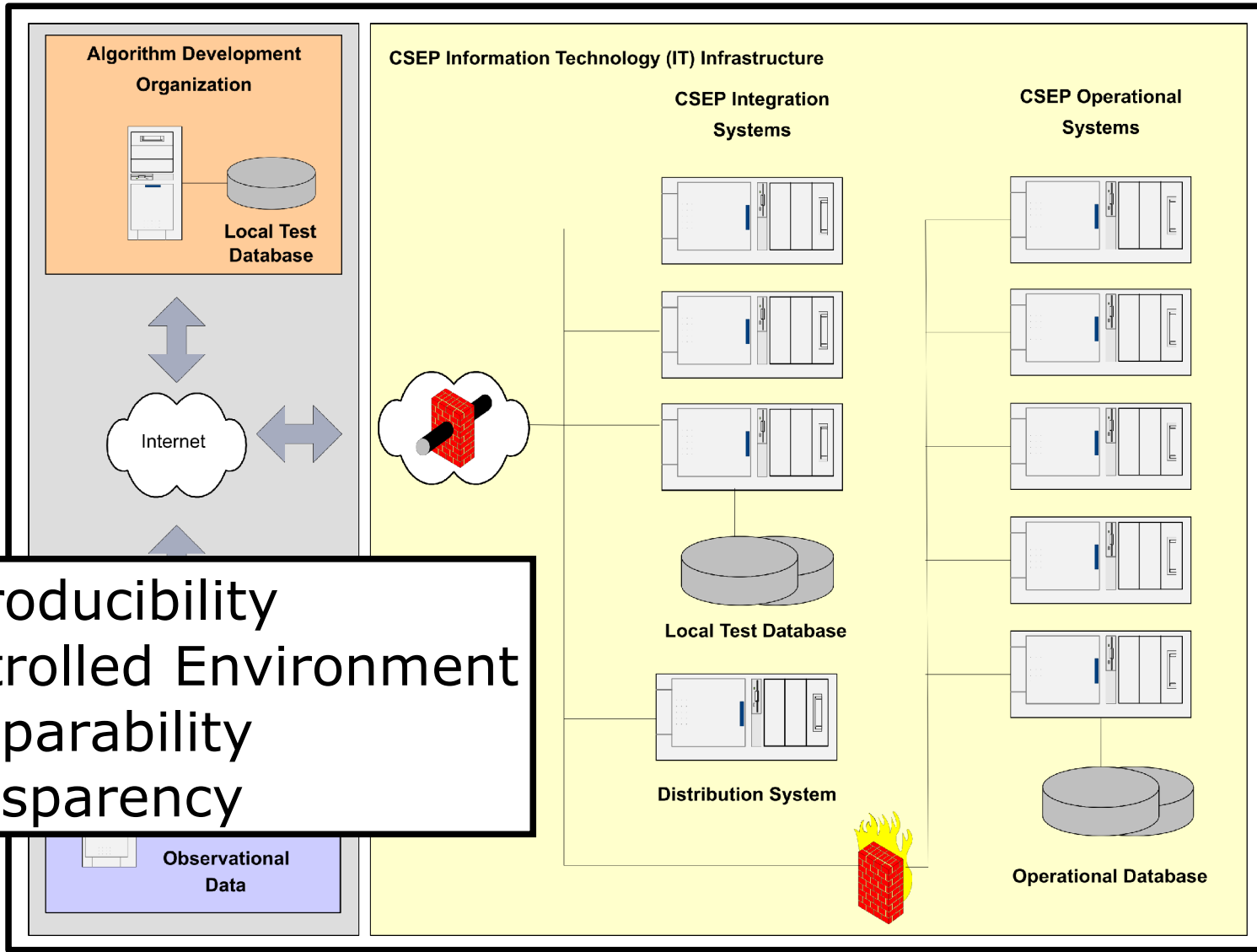




CSEP

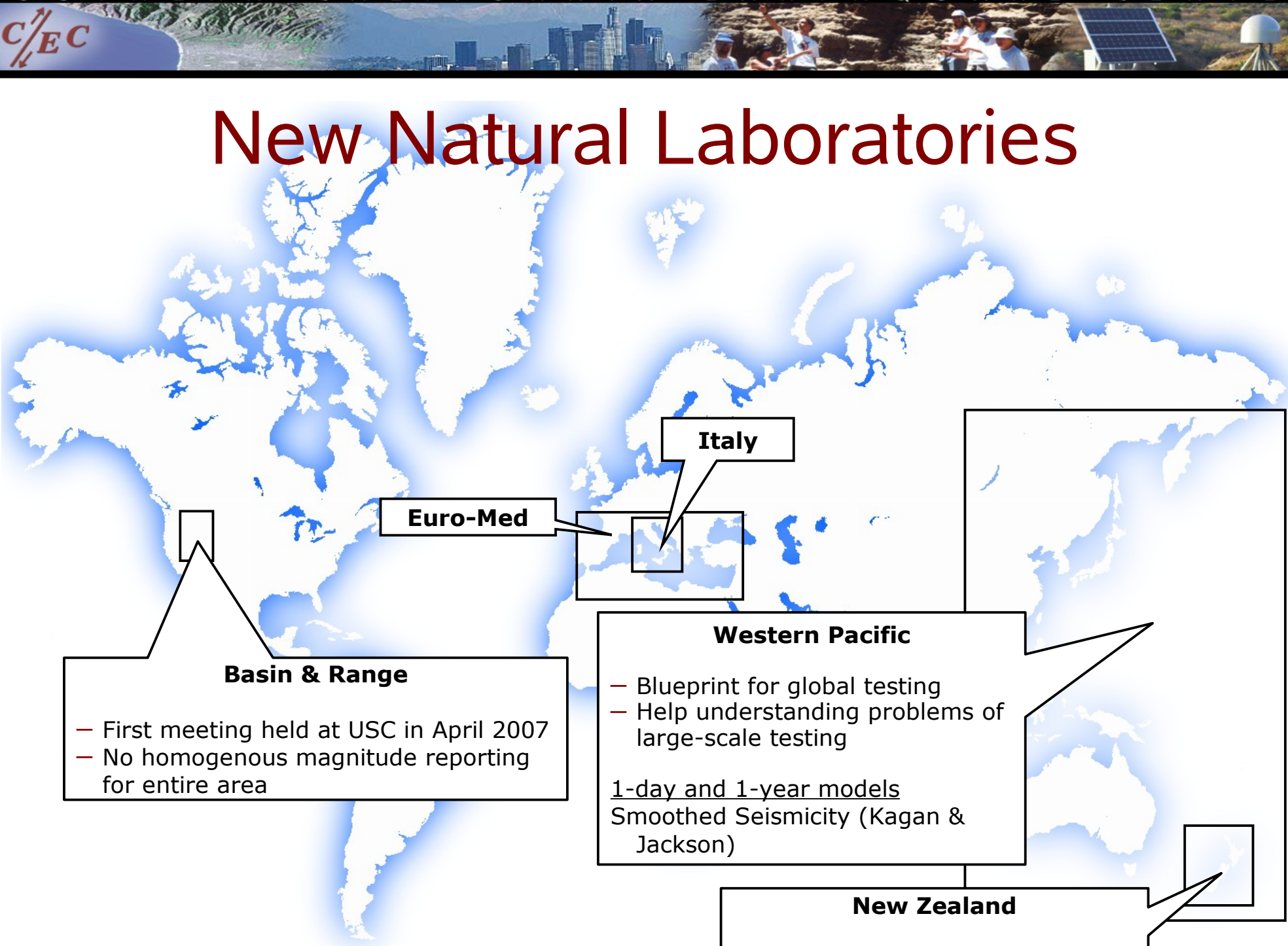
W. M. Keck Testing Center at SCEC is operational



- Reproducibility
- Controlled Environment
- Comparability
- Transparency



New Natural Laboratories



Basin & Range

- First meeting held at USC in April 2007
- No homogenous magnitude reporting for entire area

Euro-Med

Italy

Western Pacific

- Blueprint for global testing
- Help understanding problems of large-scale testing

1-day and 1-year models
Smoothed Seismicity (Kagan & Jackson)

New Zealand

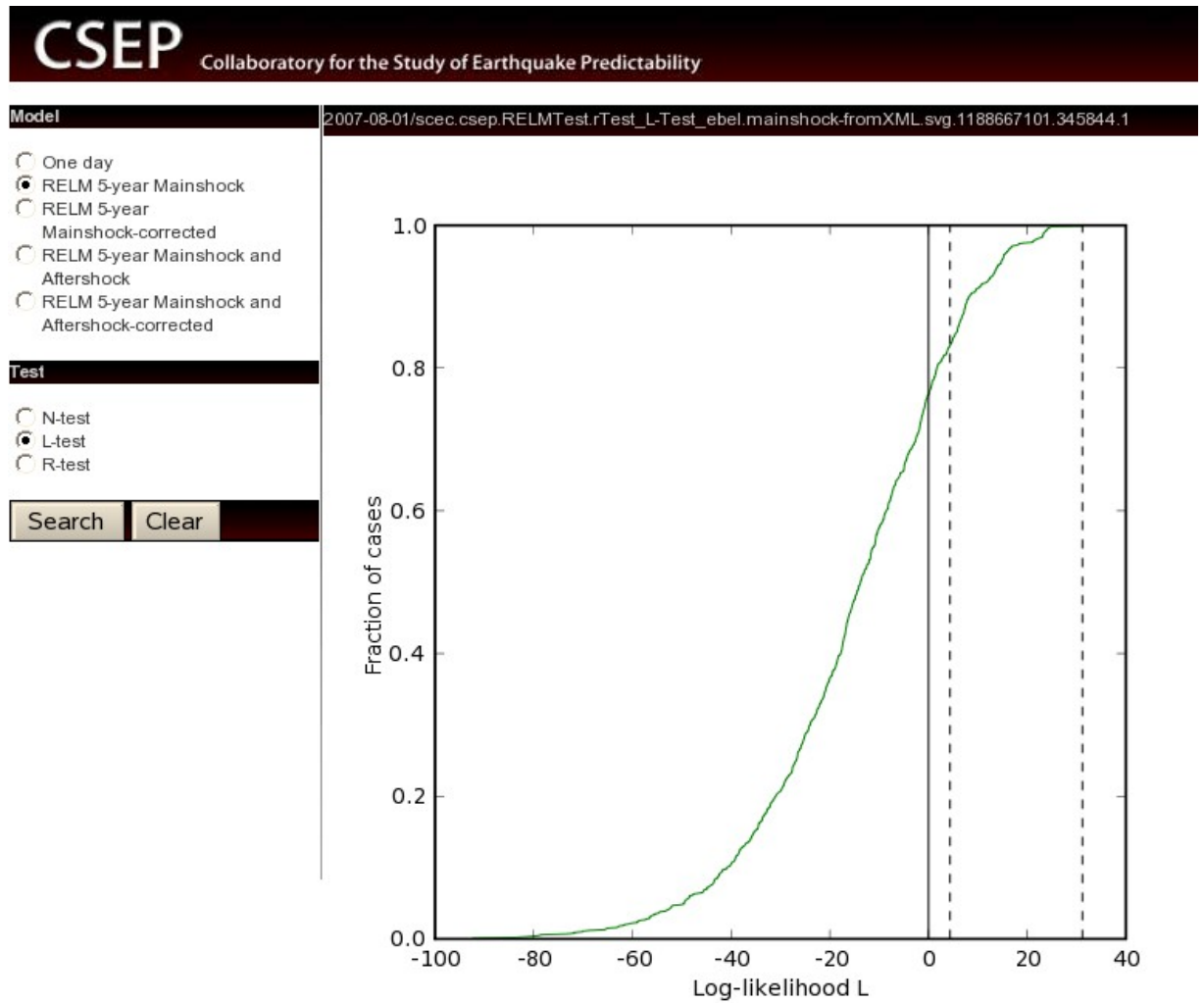
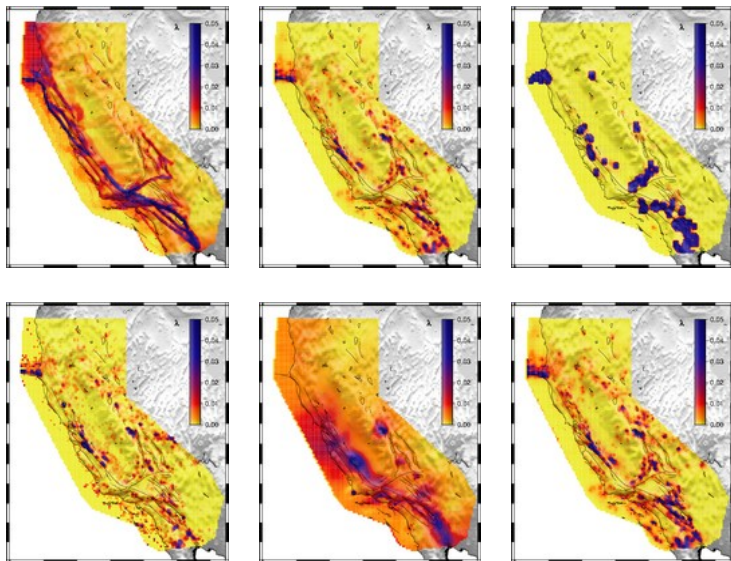
- Testing Center Software will be operational end of year

California Natural Laboratory

- N-, L-, R-Tests operational
 - 5-year models under test
 - First 1-day models under test

- Working Groups

- Data
- Model
- Testing
- Cyberinfrastructure



RFP

- Establishing rigorous procedures in controlled environments (testing centers).
- Constructing community-endorsed standards for testing and evaluation.
- Developing hardware facilities and software support to allow individual researchers and groups to participate in prediction experiments.
- Providing prediction experiments with access to data sets and monitoring products.
- Conducting workshops to facilitate international laboratories.